

Reduce Uncertainty with Wireless Tank Monitoring



Gain Immediate, Reliable Insights to Increase Reliability and Safety

Without reliable product measurements or a clear understanding of asset health, tank operations can suffer from lost production related to vapor loss and other issues affecting your bottom line. Emerson's wireless solutions allow producers to reduce uncertainty, minimize manual data entry and improve safety.

Real-time Data Helps Optimize Operations

Monitoring of tank volumes helps to avoid well shut-in and prevent environmental incidents to keep your wellpad operation running smoothly.

Precise Measurement Reduces Uncertainty

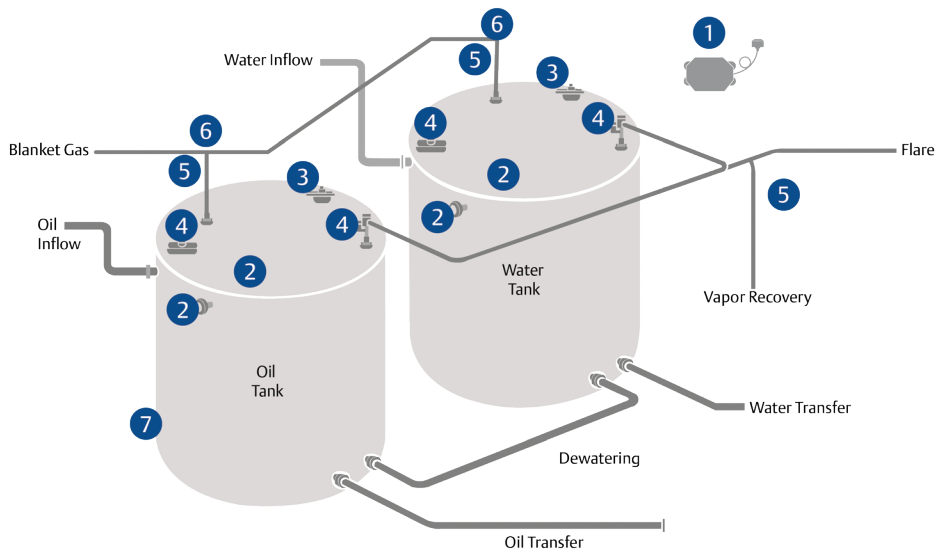
Reliable fiscal transfer measurement enables accurate allocation accounting and helps you more effectively manage tank bottoms and water inventory.

Wireless Monitoring Helps Maintain Integrity

Vapor recovery and tank blanketing systems meet HSE requirements while helping to reduce loss of product stemming from hydrocarbon leaks.

Wireless Solutions to Optimize Tank Operations

Automate your field faster and gain insight into remote operations with Emerson's wireless solutions for wellpads. Reduce maintenance headaches, spend less time on site and reduce the risk of environmental issues while maximizing production.



1 Wireless Network

Self-organizing adaptive mesh routing for easy start-up and integration.

- Emerson Wireless 1410S with Rugged Modular Gateway

2 Tank Level Measurement

Prevent overflow and protect personnel while avoiding environmental hazards.

- Rosemount™ 3308 Guided Wave Radar
- Rosemount 2160 Vibrating Fork

3 Emergency Pressure Vacuum Relief Valve Monitoring

Respond quickly to potential emergencies with remote monitoring of valve switches.

- Rosemount 702 Wireless Discrete Transmitter

4 Pressure Relief Valve Monitoring

Quickly identify source of flaring and reduce emissions.

- Rosemount 708 Acoustic Monitor
- Rosemount 702 Discrete Wireless Transmitter
- Rosemount Wireless Pressure Gauge
- Plantweb™ Insight Pressure Relief Valve and Wireless Pressure Gauge Applications

5 Blanket Gas Monitoring

Monitor gas pressure to protect workers, equipment and the environment, and assist in vapor recovery.

- Rosemount Wireless Pressure Gauge
- Plantweb Insight Wireless Pressure Gauge Application

6 Control Valve Monitoring

Remotely monitor manual valve positions and control pneumatic on/off valves.

- Fisher 4320 Wireless Position Monitor

7 Liquid Hydrocarbon Monitoring

Detect leaks earlier to avoid a forced outage and environmental issues, as well as unplanned downtime and costs.

- Rosemount 702 Discrete Wireless Transmitter with Liquid Hydrocarbon Detection

WirelessHART® sensors can be quickly added to existing units without the need for expensive and time-consuming cabling, junction boxes or additional physical I/O points, to provide greater insight faster and cost-effectively.



For more information about wireless solutions for wellpads, visit [Emerson.com](https://www.emerson.com) or contact your sales representative.